



WEIGH RIGHT
Automatic Scale Co.

NEWS RELEASE January, 2014

Weigh Right's **PMB-3601 bulk scale (bag or box)** is one of our latest Out-The-Door orders. Customer application was to weigh and fill large tortilla chips into bulk boxes. Because the chips are bulky and non-free flowing a special tray design was required so the chips could flow over the trays without being inhibited. Fill rates estimated up to 10 per minute. The customer fed the scale with another OEM infeed cleated conveyor.



Shown: PMB-3601-K

SEE SYSTEM DRAWING ON LAST PAGE

Custom Machine Feature:

Scale is designed with large vibratory pan to receive product from an infeed conveyor ensuring a controlled metered flow of product to the scale.



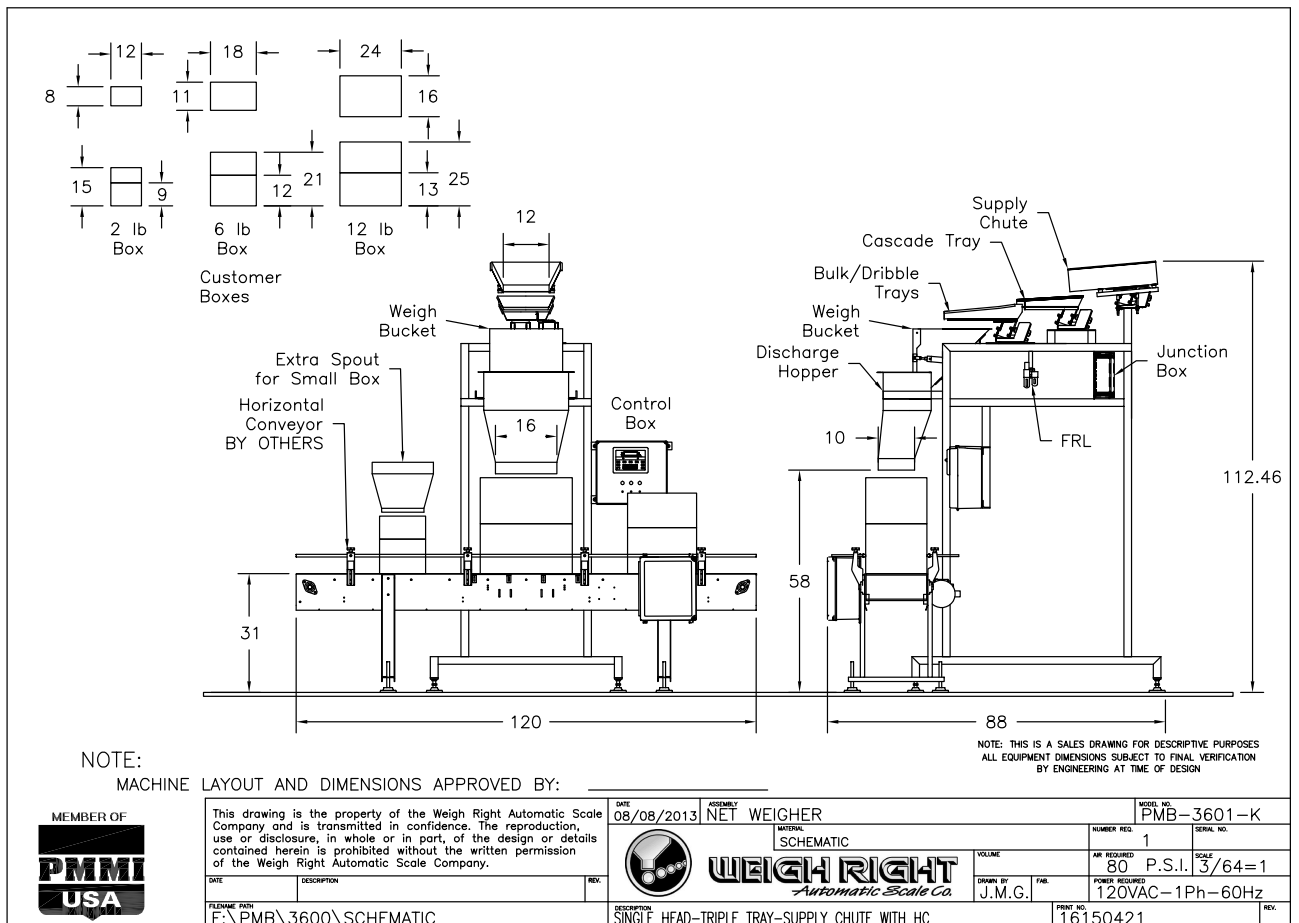
Top View of vibratory pans

Other Machine Features:

- 3 separate discharge hopper spouts were designed to fill into 3 separate size boxes for 2 lb., 6 lb., and 12 lb., fills.
- Customized discharge height to accommodate customer's box indexing conveyor.
- Touch screen menu driven controller.

Other non-free flowing product types for this scale design:

- Larger size pet treats
- Curly dry pasta
- Larger crackers
- Dry Jalapenos
- Lollipops



Call Weigh Right for more information: 800-571-0249