



WEIGH RIGHT
Automatic Scale Co.

NEWS RELEASE September 2013

Weigh Right's iQ-FLIP scale is one of our newest scale designs that gives your customer **speed, low cost and small size.**

iQ-FLIP

High Speed Low Cost Scale

More Speed for Less

- ◆ More Speed:
Up to 80 fills per minute
- ◆ Low Cost
Compared to existing multiple lane scales or combination scales
- ◆ More Production with Less Maintenance
 - Only 1 weigh hopper
 - Quick Changeover
 - Minimal contact surfaces to clean
- ◆ Less Space
fits in a 4' cube

Interface with vertical bagger or container indexing conveyor

Available in 3 Models:
1 oz. to 2 lbs.
2 lbs. to 5 lbs.
5 lbs. to 30 lbs.

WEIGH RIGHT
Automatic Scale Co.
800-571-0249
www.weighright.com



Shown: iQ-FLiP brochure

WHY GO WITH iQ-FLiP SCALE

- High-speed fill rates up to 70 fills per minute.
- Low height system (lots of speed little scale).
- Low cost ranging from \$18,500 to \$21,500 (add \$2,500 for washdown models and \$6,500 when tall support frames required).
- Interface with bagger or container indexing conveyor.

IQ-FLiP HANDLES ALL KINDS OF PRODUCTS:

- Coffee (ground or wholebean)
- Seeds
- Small Candies
- Nuts / Trail Mix
- Rice / Lentils / Beans
- IQF corn, peas and similar
- Dehydrated food pieces
- Granola
- Flax Seed

NOTE: The iQ-FLiP is best for smaller piece size products and can interface with a bagger or container indexing conveyor. Receiving equipment must run in the slave mode.

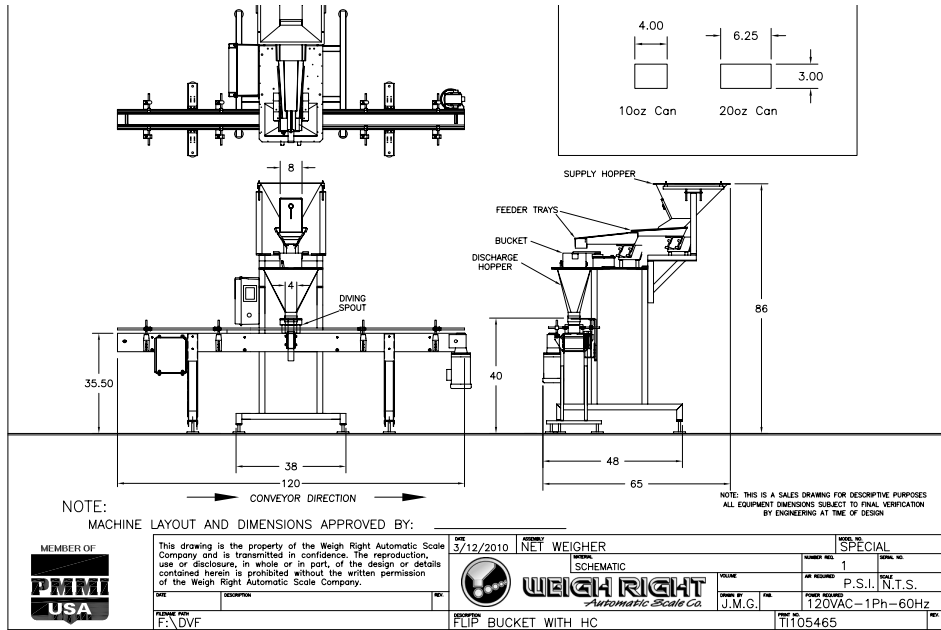


Figure 1: Schematic of the iQ-FLiP with our HC-10 container indexing conveyor offering fill rates on average between 20-50 cpm depending on product settling time and package weight.



Figure 2 iQ-FLiP showing scale mounted to top of VFFS (adds about 4' in height).

Call Weigh Right for more information: 800-571-0249